

CAREER PATHS IN CONSTRUCTION

4-YEAR OR MORE COLLEGE DEGREE AND/OR EQUIVALENT EXPERIENCE



Construction Manager
\$39.73

Architect
\$37.14

Civil Engineer
\$37.89



1-2 YEAR COLLEGE DEGREE OR APPRENTICESHIP

Heating, Air Conditioning & Refrigeration Mechanic and Installer
\$24.93

Plumber, Pipefitter, & Steamfitter
\$26.96

Electrician
\$23.55



HIGH SCHOOL DIPLOMA OR GED / ON-THE-JOB-TRAINING



Construction Supervisor
\$32.83

Cement Mason & Concrete Finisher
\$22.74

Construction Laborer
\$16.88

Carpenter
\$19.55

Brick Mason & Block Mason
\$32.01

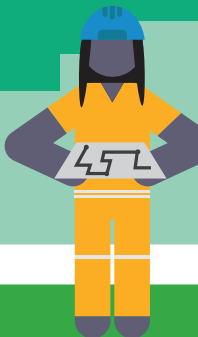
These jobs are in demand in Northwest Minnesota and these are Northwest Minnesota Median wages. Data collected from Department of Employment and Economic Development.



WHY CHOOSE A CAREER IN CONSTRUCTION?



- Steady, Booming Industry
- Fulfilling Career Choice
- Abundant Opportunities
- Feel a Sense of Accomplishment
- Make an Impact on Your Community
- Stay in Shape
- Earn a Great Income



Northwest PIC inc

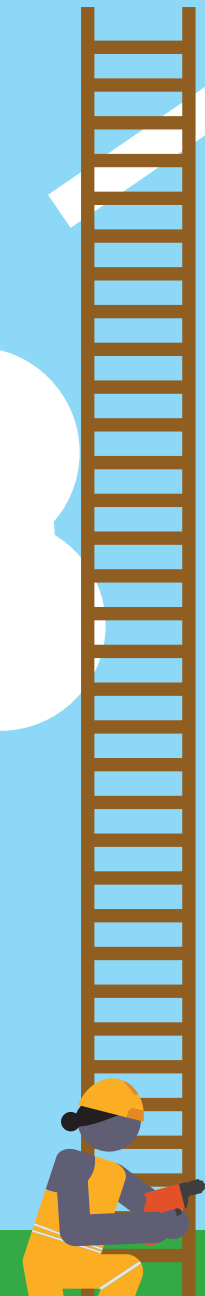
Rural Minnesota CEP
concentrated employment program, inc.

Affirmative Action/ Equal Opportunity Employer/ Americans with Disability Act.

View videos of construction workers in these occupations:
www.careeronestop.org/Videos/CareerVideos/career-videos.aspx

Upon request this form is available in alternative formats.

Contact: amys@rmcep.com



CAREER PATHS IN CONSTRUCTION



4-YEAR OR MORE COLLEGE DEGREE AND/OR EQUIVALENT EXPERIENCE

CONSTRUCTION MANAGER \$39.73

Plan, direct, or coordinate, usually through subordinate supervisory personnel, activities concerned with the construction and maintenance of structures, facilities, and systems. Participate in the conceptual development of a construction project and oversee its organization, scheduling, budgeting, and implementation. Includes managers in specialized construction fields, such as carpentry or plumbing.

ARCHITECT \$37.14

Plan and design structures, such as private residences, office buildings, theaters, factories, and other structural property.

CIVIL ENGINEER \$37.89 Perform engineering duties in planning, designing, and overseeing construction and maintenance of building structures, and facilities, such as roads, railroads, airports, bridges, harbors, channels, dams, irrigation projects, pipelines, power plants, and water and sewage systems.

1-2 YEAR COLLEGE DEGREE OR APPRENTICESHIP

HEATING, AIR CONDITIONING & REFRIGERATION MECHANIC AND INSTALLER \$24.93

Install or repair heating, central air conditioning, or refrigeration systems, including oil burners, hot-air furnaces, and heating stoves.

PLUMBER, PIPEFITTER, & STEAMFITTER \$26.96

Assemble, install, alter, and repair pipelines or pipe systems that carry water, steam, air, or other liquids or gases. May install heating and cooling equipment and mechanical control systems.

ELECTRICIAN \$23.55

Install, maintain, and repair electrical wiring, equipment, and fixtures. Ensure that work is in accordance with relevant codes. May install or service street lights, intercom systems, or electrical control systems.



HIGH SCHOOL DIPLOMA OR GED AND/OR EXPERIENCE

CONSTRUCTION SUPERVISOR \$32.83

Directly supervise and coordinate activities of construction or extraction workers.

CARPENTER \$19.55 Construct, erect, install, or repair structures and fixtures made of wood, such as concrete forms; building frameworks, including partitions, joists, studding, and rafters; and wood stairways, window and door frames, and hardwood floors. May also install cabinets, siding, drywall and batt or roll insulation.

CEMENT MASON & CONCRETE FINISHER \$22.74

Smooth and finish surfaces of poured concrete, such as floors, walks, sidewalks, roads, or curbs using a variety of hand and power tools. Align forms for sidewalks, curbs, or gutters; patch voids; and use saws to cut expansion joints.

BRICK MASON & BLOCK MASON \$32.01

Lay and bind building materials, such as brick, structural tile, concrete block, cinder block, glass block, and terra-cotta block, with mortar and other substances to construct or repair walls, partitions, arches, sewers, and other structures.

CONSTRUCTION LABORER \$16.88

Perform tasks involving physical labor at construction sites. May operate hand and power tools of all types: air hammers, earth tampers, cement mixers, small mechanical hoists, surveying and measuring equipment, and a variety of other equipment and instruments. May clean and prepare sites, dig trenches, and set braces to support the sides of excavations.

